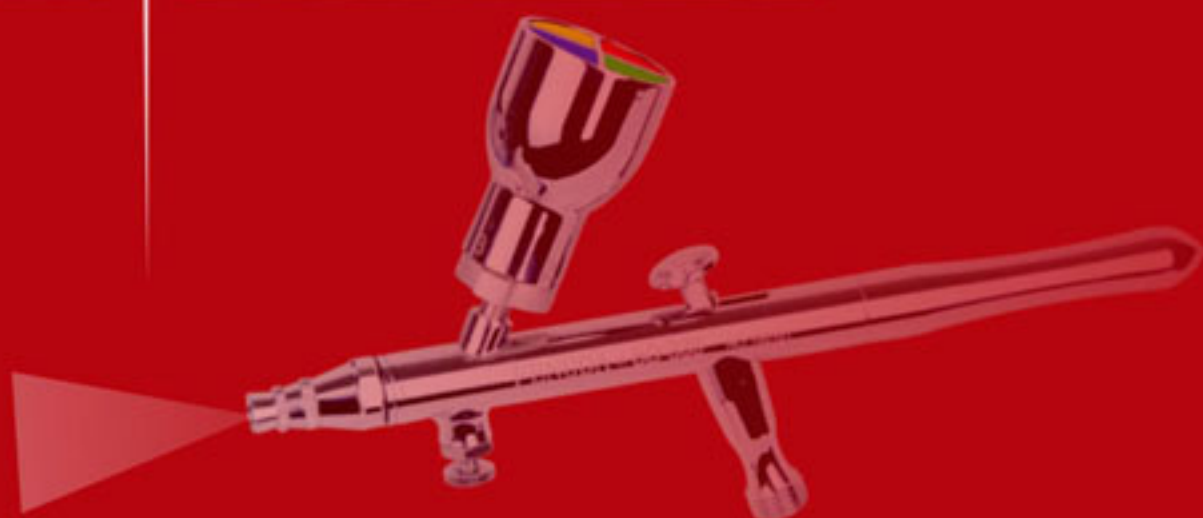


# FENGHUA BIDA LENGCHUN BIDU

NEW

2010  
3010







### **BD-210**

<b>Specifications</b>	
<b>Feed Type</b>	<b>Gravity</b>
<b>Nozzle Dia</b>	<b>0.2 , 0.25 , 0.3 or 0.5 MM</b>
<b>Cup Capacity</b>	<b>1 CC</b>
<b>Working Pressure</b>	<b>15-50 PSI</b>
<b>PCS/CTN</b>	<b>50</b>
<b>N.W./G.W.</b>	<b>14.6/ 16.6 KG</b>
<b>Carton Dimensions</b>	<b>51* 39 * 28 CM</b>
<b>Double-Action Trigger Air-paint Control.</b>	



### **BD-211**

<b>Specifications</b>	
<b>Feed Type</b>	<b>Gravity</b>
<b>Nozzle Dia</b>	<b>0.2 , 0.25 , 0.3 or 0.5 MM</b>
<b>Cup Capacity</b>	<b>5 CC</b>
<b>Working Pressure</b>	<b>15-50 PSI</b>
<b>PCS/CTN</b>	<b>50</b>
<b>N.W./G.W.</b>	<b>15/ 17 KG</b>
<b>Carton Dimensions</b>	<b>51* 39 * 28 CM</b>
<b>Double-Action Trigger Air-paint Control.</b>	





### **BD-212**

<b>Specifications</b>	
<b>Feed Type</b>	<b>Gravity</b>
<b>Nozzle Dia</b>	<b>0.2 , 0.25 , 0.3 or 0.5 MM</b>
<b>Cup Capacity</b>	<b>7 CC</b>
<b>Working Pressure</b>	<b>15-50 PSI</b>
<b>PCS/CTN</b>	<b>50</b>
<b>N.W./G.W.</b>	<b>15/ 17 KG</b>
<b>Carton Dimensions</b>	<b>51* 39 * 28 CM</b>
<b>Double-Action Trigger Air-paint Control.</b>	



### **BD-310**

<b>Specifications</b>	
<b>Feed Type</b>	<b>Gravity</b>
<b>Nozzle Dia</b>	<b>0.3 , 0.5 or 0.8 MM</b>
<b>Cup Capacity</b>	<b>2 CC</b>
<b>Working Pressure</b>	<b>15-50 PSI</b>
<b>PCS/CTN</b>	<b>50</b>
<b>N.W./G.W.</b>	<b>16/ 18 KG</b>
<b>Carton Dimensions</b>	<b>51* 39 * 28 CM</b>
<b>Double-Action Trigger Air-paint Control.</b>	





### **BD-320**

<b>Specifications</b>	
<b>Feed Type</b>	<b>Gravity</b>
<b>Nozzle Dia</b>	<b>0.3, 0.5 or 0.8 MM</b>
<b>Cup Capacity</b>	<b>9 CC</b>
<b>Working Pressure</b>	<b>15-50 PSI</b>
<b>PCS/CTN</b>	<b>50</b>
<b>N.W./G.W.</b>	<b>16.4/ 18.4 KG</b>
<b>Carton Dimensions</b>	<b>51* 39 * 28 CM</b>
<b>Double-Action Trigger Air-paint Control.</b>	



### **BD-330 4-COLOR-CUP AIRBURUSH**

<b>Specifications</b>	
<b>Feed Type</b>	<b>Gravity</b>
<b>Nozzle Dia</b>	<b>0.3, 0.5 or 0.8 MM</b>
<b>Cup Capacity</b>	<b>13 CC</b>
<b>Working Pressure</b>	<b>15-50 PSI</b>
<b>PCS/CTN</b>	<b>50</b>
<b>N.W./G.W.</b>	<b>19.2/ 20.2 KG</b>
<b>Carton Dimensions</b>	<b>51* 39 * 28 CM</b>
<b>Double-Action Trigger Air-paint Control.</b>	



### **BD-15A**

TABLE EDGE AIRBRUSH STAND  
HOLD 2 AIRBRUSHES  
EASILY TO CLAMP ANY TABLE, THE FOAM  
COVERED UNDERSIDE THE BASE TO PREVENT  
SCRATCH OF THE TABLE SURFACE  
THE ADDITIONAL HANDY BRACKET ALLOWED  
YOU TO FIX A FILTER REGULATOR UNIT TO IT.

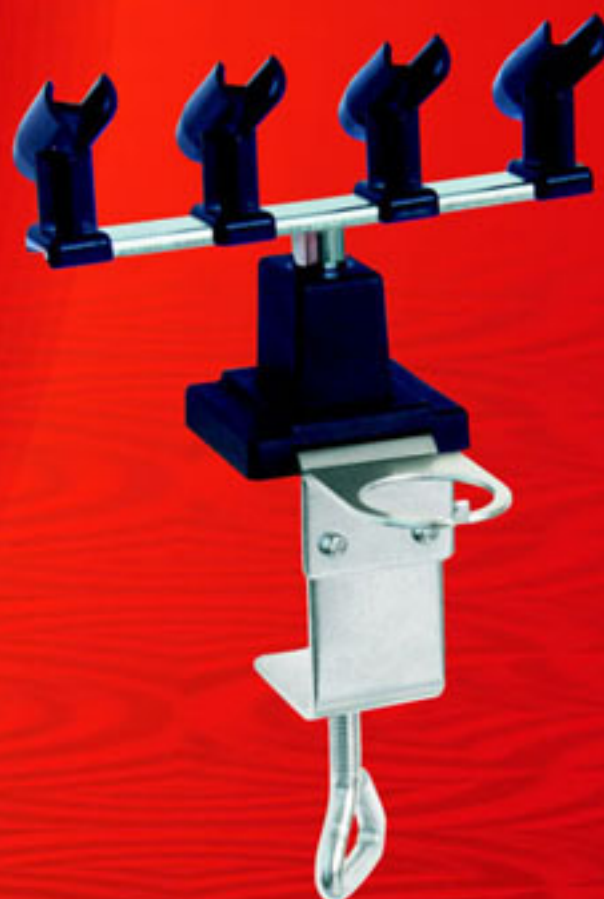
PCS/CTN	40
N.W./G.W.	15.3/16.3 KG
Carton Dimensions	49*30.5*51CM



### **BD-15B**

TABLE EDGE AIRBRUSH STAND  
HOLD 4 AIRBRUSHES  
EASILY TO CLAMP ANY TABLE, THE FOAM  
COVERED UNDERSIDE THE BASE TO PREVENT  
SCRATCH OF THE TABLE SURFACE  
THE ADDITIONAL HANDY BRACKET ALLOWED  
YOU TO FIX A FILTER REGULATOR UNIT TO IT.

Каличество в упаковке.....	40
Вес нетто/брутто.....	15/16 кг
Габарит коробки.....	49*30.5*51см





### **BD-821**

The Power Palette is a quick color changer used to apply airbrush ink and paint. It is used friendly, low maintenance, air-tight, and self-cleaning. You gain fingertip access to dozens of colors, shades of colors using one airbrush, saving you time and money. The Power Palette is better/faster than a multi-gun operation. Easy to turn dial Kink-proof line assembly. Durable, reliable, maintenance friendly Air-tight: no change in ink consistency No need for multiple guns Self cleaning (airbrush BD-182 is included) PCS/CTN:2 Carton Dimensions:53\* 53 \* 28 CM



### **BD-830**

12V DC Mini Air Pump  
Air Pressure:28 PSI  
Air flow:10 L/ MIN  
AC adaptor  
Input:100-250V, 50-60 HZ  
Output 12V DC, 1.6A Continates  
Battery Charge Period 2.5 hours  
Continuous working time for 1.5hours  
after full charge,but it should be cool down  
after 30 minutes's working.  
Nice design and good quality  
Air Brush Single Action  
Two colour available  
black or yellow  
Cup Capacity: 2 CC  
Air consumption: 10-30 PSI  
Nozzle Dia: 0.3 or 0.4 MM  
Air Hose: 2 M  
PCS/CTN: 5  
N.W./G.W.: 6.2/8.2 KG  
Carton Dimensions: 40\*33\*27 CM





## AS-188

Oil-less single cylinder piston compressor with Air tank

### FEATURES:

1. Multifunctional, low noise.
2. Thermally protected.
3. Specific design of inside-airfilter could filter the more water in the air, and easily to change the pressure by the blue knob.
4. Extra 2 brackets to hold 2 airbrushes

### SPECIFICATIONS:

POWER: 1/8HP

VOLTAGE: 220-240V/50HZ, 110-120V, 220V/60HZ

MAXIMUM PRESSURE: 4 BARS (58PSI)

AIR OUTPUT PER MIN.: 20-23L/MIN.

AUTO-STOP: 4 BAR; AUTO-START: 3 BAR

SAFETY VALVE: release the air pressure Automatically when the pressure over 6bar in the air tank.

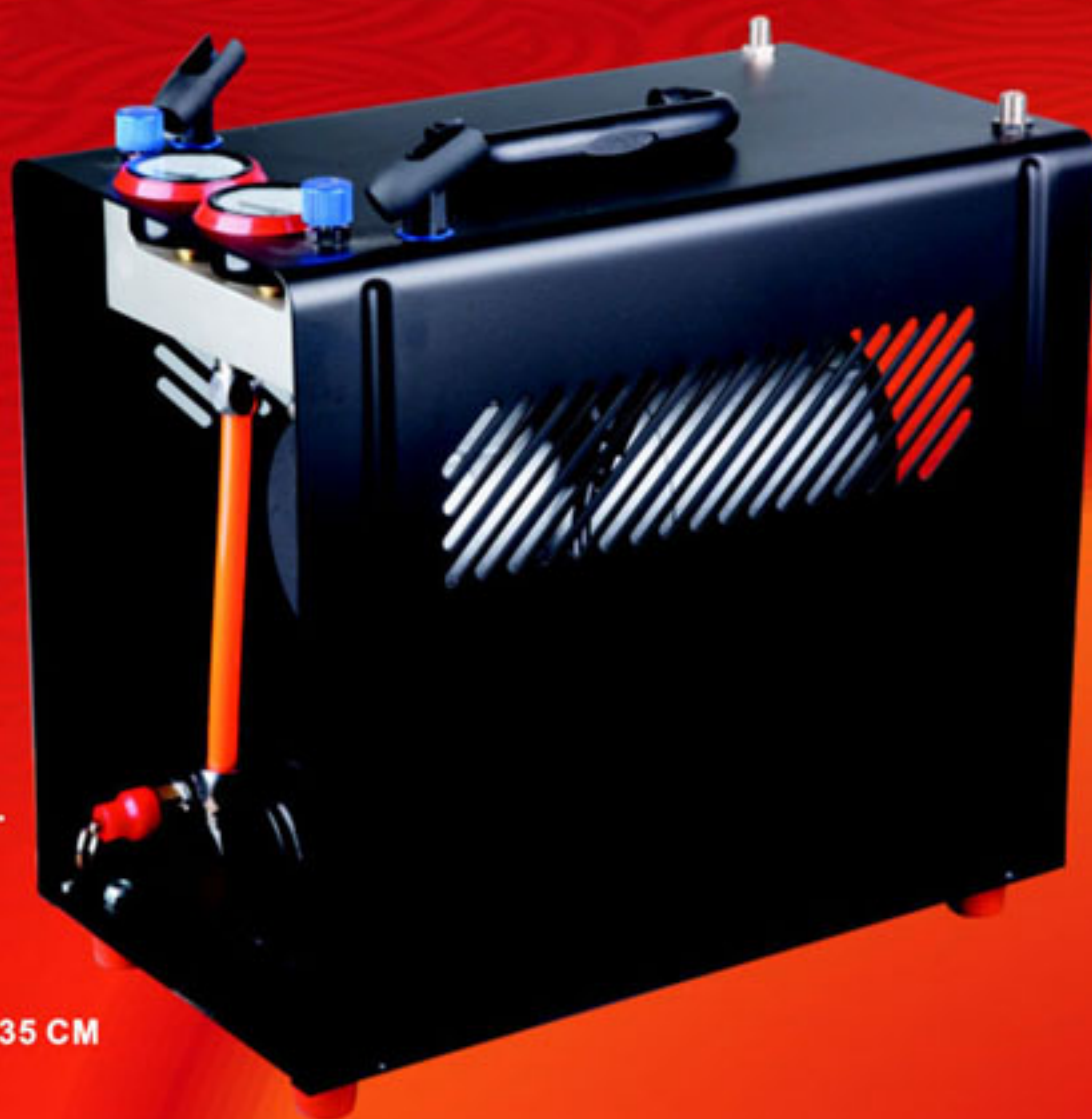
AIR TANK: 3.0L

CONNECTIONS: 1/8" BSP

ELECTRIC CABLE: 1.9M

PCS/CTN: 4

N.W./G.W.: 21.6/23.6 KGCARTON DIMENSIONS: 62.5\*34\*35 CM



## BD-510

This table top spay booth is suitable for application using an airbrush or spray cans. Air is channeled from the open booth face and then pulled through the rear filter area.

Your overspray particulate matter is caught by the filters and the fumes are vented through the ventilating pipe

Length of extended pipe :30 CM

G.W./N.W.: 7.5/8.5 KG

PCS/CTN: 2

Carton Dimensions: 51\* 49 \* 36 CM

